



We encourage, empower & engage local business & community - [Read more](#)

# 6 storey DA

## Georges River Rd (cnr Brighton Ave)

The Chamber is following up concerns by members and residents about a development application submitted for a 6 storey building, including 30 rooms of boarding accommodation, opposite Croydon Park Public School - [track DA's here](#)



The **Croydon Park Youth Committee** and members of the Chamber visited the Children's Medical Research Institute in Westmead to present them with a cheque for \$1,366.80. The money was during a Halloween event at Belmore last year - see the related story below about winning a Rotary Award!



After the success of 2014, Croydon Park Business Chamber is proud to announce the exciting return of the **Experience Croydon Park! Festival: A festival like no other**. With a range of activities to get the whole community involved, this event will be sure to delight! Why should your Business be part of the festival?

- to bring more customers to you / your business.
- to connect members of the community with your product, goods and services.

- to extend your reach of exposure to the growing Inner West communities.
- to make your presence known in your Industry.
- to help your business stand out from the others.
- to get your brand noticed.
- to celebrate and raise awareness about our local environment, businesses & services.

Submit your **Expression of Interest** at

[www.franzeevents.com.au](http://www.franzeevents.com.au)



We are thrilled that Croydon Park Business Chamber Youth Committee has been awarded a **Business Community Award** by the [Rotary Club of Burwood](#). Sincere thank you to the [Children's Medical Research Institute](#) for nominating the Youth Committee for their Halloween fundraising efforts, and thank you to Burwood Rotary for organising a wonderful event - see our Facebook page for photos.



The Chamber is concerned about the number of business owners receiving parking fines. To allow business operators to park their vehicles in restricted areas without time restrictions or charge Burwood Council has implemented a [Permit Parking Scheme](#) - More info [Permit Parking Scheme Application Form](#) and [FAQs](#)

---



Join us at [Bizruption](#) on Mon 4 April, 2016, 5-7:30pm at Wests Ashfield Leagues Club for great opportunity to networking and learning. Bizruption is hosted by [Netstripes](#), and this event is being run in partnership with Ashfield, Marrickville, and Leichhardt Councils.



[Community Market](#) provides a delivery platform for wide ranging sponsorship activity, based around engaging and supporting local communities. It's application is unashamed reciprocity. No handouts, simply a benevolent commercial exchange. Trading community participation, to achieve a common goal of community growth.



**Anyone interested in partnering with our Chamber?** - Australia Post recognises just how vital local projects can be in bringing people together. By providing funding of up to \$10,000 per project, the Grants program gives a helping hand to small groups working to build a more inclusive, connected society. Applications now open - [Learn more](#)



[Ashfield Carnival of Cultures](#) - On Sun 20 March 2016 the Carnival Cultures will be held in the beautiful, historic Ashfield Park, the same day we celebrate National Harmony Day. More info contact [Ashfield@eventproject.com.au](mailto:Ashfield@eventproject.com.au) or call Margot 0410 338 331.



Ashfield, Burwood, City of Canada Bay, Leichhardt & Marrickville Councils are seeking young people 12–24 to write, direct & perform their own works. Each participant will be mentored by a professional writer & director to develop their own short plays. Over a three-month period you will make friends, gain skills & rehearse your own work which will tour the Inner West in June. Auditions Wed 2 Mar, 6-8pm at Ashfield Civic Centre - More info: [ashfielddyouththeatre.com](http://ashfielddyouththeatre.com) or email [felicityn@ashfield.nsw.gov.au](mailto:felicityn@ashfield.nsw.gov.au)



Do you serve on a board or committee? Do you give your time and skills to help govern a community organisation? The Institute of Community Directors will host free, members-only cocktail functions throughout the Festival, in order to celebrate your achievements and to provide a forum for informal networking with your community governance peers. We invite members to join us at one of the following cocktail events. (Not a member? Now's a great time to [join](#)) - Wed, 27 April 2016, 5-6 pm at Cliftons Sydney (Level 13, 60 Margaret St)



[Ashfield Business Update](#) gives local businesses the latest information on Council services, events, initiatives and news.

Council has commenced a bold project to revitalise the Ashfield Town Centre to renew the public spaces to make Ashfield a safer, more attractive, pedestrian friendly and lively destination to visit and do business - see [Ashfield Town Centre Renerwal Strategy](#) and [Map 1](#)



**Burwood**  
heritage • progress • pride

Subscribe to Burwood Council's local business directory and automatically be emailed their bimonthly [E-News](#) including updates from council, local business profiles and information about upcoming events.



[Second Hand Saturdays](#) are giant community garage sales that are supported by Council. Second Hand Saturday gives residents the opportunity to sell unwanted items for some extra cash. It reduces the amount of waste going to landfill, by facilitating reuse of the things that are no longer needed and promoting community spirit. Second Hand Saturday brings together people in the neighbourhood and from outside the area in the hunt for a bargain.

**Burwood Council**  
heritage • progress • pride

International Women's Day 2016

**PLEDGE FOR PARITY**  
*It's time for the world to accelerate Gender Parity*

Please come and join us to celebrate the economic, cultural and political achievements of women.

Let's also be aware that progress towards GENDER PARITY has actually slowed in many places around the world, so urgent concrete action is needed to accelerate gender parity.

For more information please visit the International Women's Day Website.  
[www.internationalwomensday.com.au](http://www.internationalwomensday.com.au)

This Event is supported by:  
**Relationships Australia** NEW SOUTH WALES  
**metro assist**

**International Women's Day High Tea Event**  
*FREE Community Event*

**WHEN:** Tuesday 15 March 2016  
**TIME:** 10.00am to 12.00pm  
**VENUE:** Burwood Library & Community Hub  
2 Conder St, Burwood

High Tea, Entertainment, Special Guest Speakers, Hand Massages and The Body Shop Lucky Door Prizes!!

**Register by Friday 4 March 2016**

**TO REGISTER FOR THIS EVENT**  
Contact Community Hub on 9798 1701 or email: [communityhub@metroassist.org.au](mailto:communityhub@metroassist.org.au)

**THE BODY SHOP.**

**International Women's Day [FREE High Tea Event](#)** - including entertainment, special guest speakers, hand massages and The Body Shop Lucky Door prizes. Tue 15 March, 10am-12pm at Burwood Library. Register by Fri 4 March by calling 9798 1701 or email [communityhub@metroassist.org.au](mailto:communityhub@metroassist.org.au)



- [Calendar of events 2016](#) now out!
- Dates & details for [Lakemba Community Markets](#)
- [Palm Sunday Rally - Welcome Refugees](#) - 20 March, Belmore Park
- Watch [Grey-headed Flying-foxes](#) stream out from their Turrella camp in their thousands; share this 'wow' experience with friends and family. Learn more about these important 'night workers.' There will be 'batty craft' for children, young and old to enjoy - [more info](#)
- [Find my past - Family history workshop](#)



[After 5 Business Networking Event](#) with special Guest Speaker, the General Manager of Canterbury Hurlstone Park RSL, **Mary McTaggart**. Thu 17 Mar 2016, 5-7pm. Viva Room, Canterbury Hurlstone Park RSL. RSVP to **Elizabeth Waser** on **9789 9492** or email [elizabethw@canterbury.nsw.gov.au](mailto:elizabethw@canterbury.nsw.gov.au).

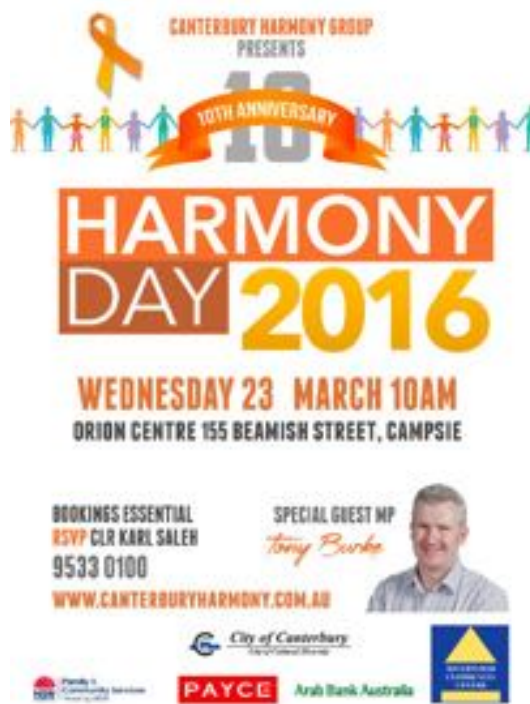


[Palm Sunday Rally](#) - Welcome refugees, 1pm, Sun 20 Mar 2016 at Belmore Park. March to Victoria Park. More info call Ian 0417 275 713, Penny 0402 355 205 or Peter 0418 312 301.



**Sydney Rides Business Challenge** - Get your colleagues riding and show your support for cycling in Sydney! The Sydney Rides Business Challenge is fun and simple - ride a bike anywhere, any time for 10 minutes or more between Monday 22 February and Sunday 20 March 2016 for your chance to [win!](#)

---



CANTERBURY HARMONY GROUP  
PRESENTS


10<sup>TH</sup> ANNIVERSARY

# HARMONY DAY 2016

WEDNESDAY 23 MARCH 10AM  
ORION CENTRE 155 BEAMISH STREET, CAMPSIE

BOOKINGS ESSENTIAL  
RSVP CLR KARL SALEH  
9533 0100  
[WWW.CANTERBURYHARMONY.COM.AU](http://WWW.CANTERBURYHARMONY.COM.AU)


SPECIAL GUEST MP  
*Tony Burke*



City of Canterbury  
Council of Elders

Priority 2  
Community Services

PAYCE Arab Bank Australia



**Harmony Day 2016** - Wed 23 March, Orion Centre, Campsie. Special guest Tony Bourke, MP. Bookings essential, RSVP to Karl Saleh 9533 0100 - [www.canterburyharmony.com.au](http://www.canterburyharmony.com.au)



City of Canterbury Library Service is excited to launch a [brand new interactive Community History space](#) on **Tue 29 Mar 2016**, 11am at Campsie Library. Twelve months in the making, this history space incorporates **permanent exhibitions**, dedicated **research computers**, **colourful wall projections** and an exciting new **interactive touch table**. Join them for a free morning tea to meet the people behind the project and explore the exciting new space - RSVP by email [elissaj@canterbury.nsw.gov.au](mailto:elissaj@canterbury.nsw.gov.au) or call 97899380.

---



## NSW Business Chamber News



Join NSW Business Chamber and **Father Chris Riley, AM** for a special business luncheon, Thu 10 March, 12-2pm at Star Room, IMAX Theatre. Cost: Members - \$65; Local Chamber Members- \$75; Non members - \$90.00. [Register](#) or email [events@nswbc.com.au](mailto:events@nswbc.com.au) or call Ella Sallustio 9458 7733.



How do you understand the legal implications for your business and ensure you stay compliant and up to date? Included as part of your **Chamber membership** the [Legal Advice lines](#) (13 29 59) gives members access to compliant and up-to-date legal advice, tailored to your business, without the heavy consultancy fees, including Corporate & commercial law; Property law & leasing; Communications, media & technology; Competition & consumer law; Dispute resolution; and Intellectual property.





The NSW Business Chamber is seeing more and more lawyers and unions going in to bat for **employee** rights. Each year, tens of thousands of workplace claims are recorded in the Fair Work Commission. In many cases, the employer is unaware of any non-compliance on their part. This is a clear and present worry for employers, who need to step up and take action to minimise the risk of crippling claims. With systems in place to vigorously defend employees, who can you trust to protect your business? NSW Business Chamber is introducing [Workplace Assured](#) - a new service which acts as your first and last line of defence when it comes to managing workplace compliance risks.



**Want to save money on your energy bills and understand how to reduce energy usage?** The Better Energy Manager Program can help you achieve both; by finding the possible retailer and price for you. The program also provides you with energy saving tips and tricks to keep your bills low and reduce consumption. This is an exclusive offer only available for members of the NSW Business Chamber. There is no cost to be part of the program and there is no obligation to accept the quotation or contract offered to you. Log in to [Local Chamber Alliance Portal](#) or see our website under [Special Offers](#) for more info.



[The Chamber Alliance Program](#) provides members of Local Chambers to benefits from the NSW Business Chamber at no additional cost, including advice, tools, products and services. See link for more info and [join us](#) today.



## Australian Chamber of Commerce & Industry News

[Australian Chamber applauds Treasurer's vow to reduce government spending](#)

[Safe businesses are smart businesses](#)



**World Social Work Day 2016** is on March 15th. The theme '**Promoting the Dignity and Worth of Peoples**', which comes from the [Global Agenda for Social Work and Social Development](#).



When a family falls into crisis, which can happen due to unemployment, drugs, bad relationships, and bad luck, the service system is supposed to help. A typical UK family in crisis can be eligible for services from over 70 agencies, but it's unlikely any can make a difference. Cottam, a social entrepreneur herself, asks us to think about the ways we solve deep and complex social problems - [watch here](#).



Raise up to SEVEN times more money from your fundraising efforts. [Frontstream's](#) feature-packed online fundraising system does the work for you, right from your own website - [free demo](#)



[Chuffed](#) is a crowdfunding platform for socially-conscious projects from around the world. They support individuals, not-for-profits, social enterprises and community groups to run awesome crowdfunding campaigns, all 100% free. [Check out our No-interest Loans campaign](#)



As business increasingly looks for profitable, innovative ways to solve global challenges, a shared value approach provides the incentive—and competitive edge—to make social change. [Read about shared value at the World Economic Forum.](#)



[Salesforce](#) is a self-funded social enterprise providing best-in-class technology to social impact organization. Download the ebook, [Small Nonprofit, Big Impact: How to Punch Above Your Weight](#), to explore how the landscape is changing for nonprofits.



*QUICK READ* - What's the difference between research and evaluation? FSG's Katelyn Mack discusses the [4 most common methods of inquiry](#) and how to choose the right approach for your program or initiative.



**Croydon Park Business Chamber** is a not-for-profit service run by local volunteers. We develop projects, run events, & promote activities in the Canterbury, Burwood & Ashfield LGAs. Membership is open to businesses that are home-based, shopfronts, or online; as well as NGOs, community groups, & volunteers. **Membership is only \$2 - \$13.50 a week** - excellent value for advertising your business, receiving benefits, promoting your service or group, or simply giving something back (all welcome). Check out our [Membership Flyer](#), [2015/16 membership benefits](#), and our [2015/16 plan](#).



[Check out our Prezi](#) to learn more about the Chamber's vision, collaborators, and member benefits.

# Shop local!

CLICK OUR MEMBER LOGOs FOR MORE INFO



**RICH & OLIVA**  
REAL ESTATE

**OPTUS** *yes*  
CAMPSIE



Hair Collections

**ATELIER LEGAL** PTY LTD



la bocca  
*B*  
deli cafe

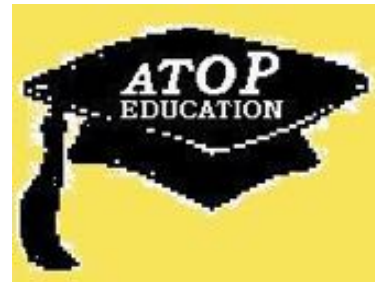
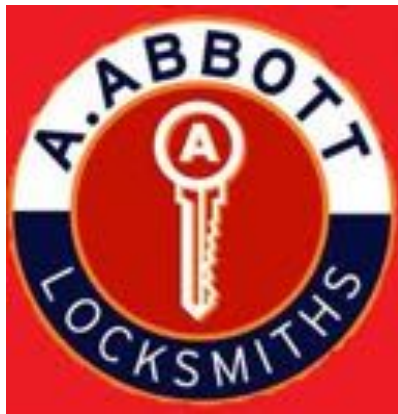


**Social Enterprise**

ABN 98241873168



**7 DAYS**  
PLUMBING AND  
BATHROOM SUPPLIES



CCS PARTNERS  
CHARTERED ACCOUNTANTS



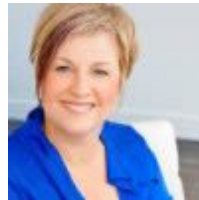


De Marco Financial Solutions Pty Ltd  
Chartered Accountant & Tax Agent



**JAMES & ASSOCIATES**  
Professional, accessible and friendly service











So, how are we doing? Go on, be honest!

Take our 1 minute [Survey Monkey](#).

Feedback updated on our website.

THANK YOU :)



Got a local event, project or some news to share in our April newsletter? Submit by end of March -

[Contact us today](#)

[Facebook](#) [Twitter](#) [Website](#)

Copyright © 2016 Croydon Park Business Chamber, All rights reserved.

**Contact us:**

[info@croydonparkbusiness.com.au](mailto:info@croydonparkbusiness.com.au)

[unsubscribe from this list](#) [update subscription preferences](#)